

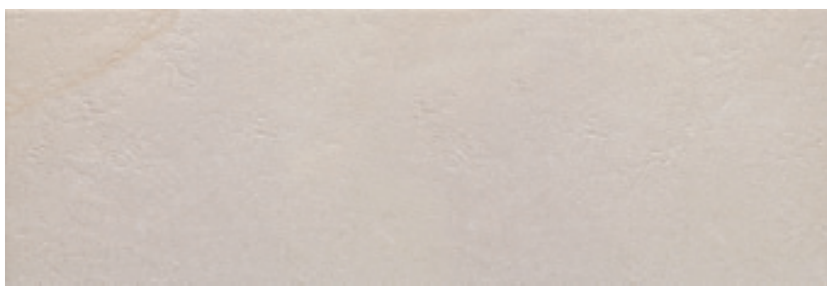
DAYTON DUNA CROIX DELI

Monoporosa Rectificado
Rectified Wall Tiles



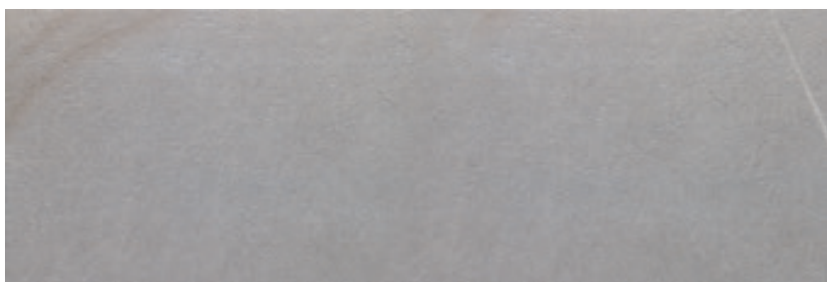
PERFIL

1.5x100 cm (x15.0 mm) 5/8"x39 1/2"
PERFIL DAYTON SAND
V3960372 - 100221352 - G97
PERFIL DAYTON ASH
V3960370 - 100221317 - G97
PERFIL DAYTON GRAPHITE
V3960371 - 100221351 - G97



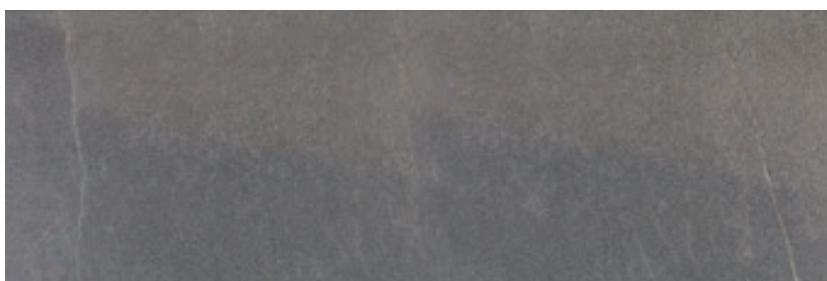
DAYTON SAND

33.3x100 cm (x9.2 mm) 13"x39 1/2"
V1440282 - 100214500 - G271
Butech Recomienda junta *Recommends joint*
colorstuk rapid n beige B22502016 - 100004308



DAYTON ASH

33.3x100 cm (x9.2 mm) 13"x39 1/2"
V1440278 - 100215042 - G271
Butech Recomienda junta *Recommends joint*
colorstuk rapid n manhattan B22502002 - 100004295



DAYTON GRAPHITE

33.3x100 cm (x9.2 mm) 13"x39 1/2"
V1440277 - 100215008 - G271
Butech Recomienda junta *Recommends joint*
colorstuk rapid n cemento B22502004 - 100004297

EMBALAJE PACKAGING Modelo Model	x CAJA BOX			x PALET			ADHESIVO
	Pieces	M ² (1)	Kg (1)	Box	M ² (1)	Kg (1)	Butech
Dayton 33.3x100 cm	4	1.33	21.18	55	73.26	1165	Fr-one n
Perfil 1.5x100 cm	15	0.45	5.40	28	12.60	151	Fr-one n

(1) Valores aproximados Approximated values

PAVIMENTO COMBINABLE

FLOOR TILE COMBINATIONS
Dayton 80x80 cm
Dayton 59.6x59.6 cm
Pág 216-217

