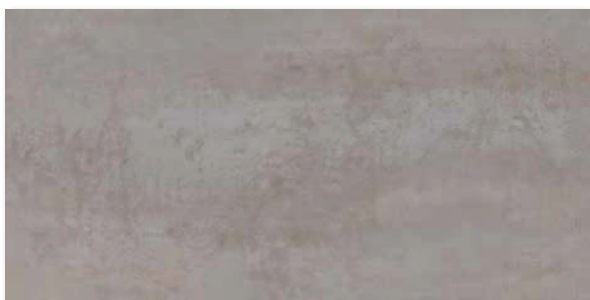




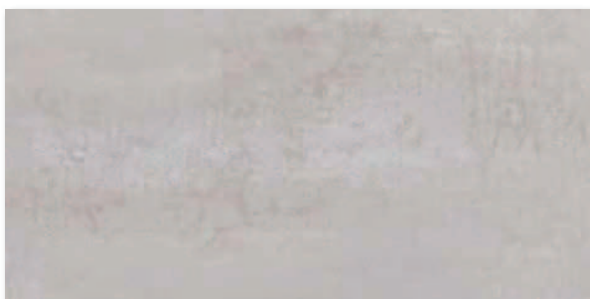
PAVIMENTO  
FLOOR TILE



**FERROKER**  
V5900300 - 100027092  
59.6x120 cm (x11.5 mm)  
23 1/2"x47 1/4"  
Gres Porcelánico  
Porcelain tile  
V3  
G381  
Butech: Junta Colorstuk Antracita ✓



**FERROKER ALUMINIO**  
V5908221 - 100031361  
59.6x120 cm (x11.5 mm)  
23 1/2"x47 1/4"  
Gres Porcelánico  
Porcelain tile  
V3  
G381  
Butech: Junta Colorstuk Manhattan ✓



**FERROKER NIQUEL**  
V5908323 - 100094915  
59.6x120 cm (x11.5 mm)  
23 1/2"x47 1/4"  
Gres Porcelánico  
Porcelain tile  
V2  
G381  
Butech: Junta Colorstuk Gris ✓



PAVIMENTO  
FLOOR TILE



**FERROKER PLATINO**  
V5908324 - 100094916  
59.6x120 cm (x11.5 mm)  
23 1/2"x47 1/4"  
Gres Porcelánico  
Porcelain tile  
V2  
G381  
Butech: Junta Colorstuk Blanco ✓



**FERROKER TITANIO**  
V5908325 - 100094917  
59.6x120 cm (x11.5 mm)  
23 1/2"x47 1/4"  
Gres Porcelánico  
Porcelain tile  
V2  
G381  
Butech: Junta Colorstuk Marfil ✓

FLOOR TILES

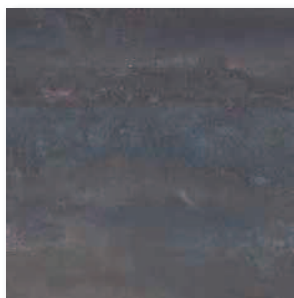
| EMBALAJE PACKAGING      |            |                                |         | COLOCACIÓN FIXING              |   |                                  | IMPORTANTE IMPORTANT  |
|-------------------------|------------|--------------------------------|---------|--------------------------------|---|----------------------------------|---|
| Descripción Description | x Caja Box |                                | x Palet |                                |   | Recomendamos We recommend Butech | ✓ color de junta recomendado recommended grout colour   |
| 59.6x120 cm             | Pieces     | M <sup>2</sup> Kg <sup>3</sup> | Box     | M <sup>2</sup> Kg <sup>3</sup> | Adhesivo Adhesive<br>One-Flex, Maxifluid<br>Super-one | Junta Grout<br>Colorstuk         | [59.6x120 cm] No disponible en stock. Consultar condiciones Not in stock. Check conditions<br>Utilizar materiales de colocación específicos para Gres Porcelánico<br>Use specific Porcelain Tiles setting materials |
|                         | 2          | 1.43 38.40                     | 25      | 35.76 960                      |   |                                  | Colecciones complementarias Complementary collections: [Ruggine, Shine, Queens]   |

\*Valores aproximados Approximated values

# FERROKER



PAVIMENTO  
FLOOR TILE



**FERROKER**  
V5590578 - 100088302  
59.6x59.6 cm (x10.5 mm)  
23 1/2"x23 1/2"  
Gres Porcelánico  
Porcelain tile  
V3  
G354  
Butech: Junta Colorstuk Antracita ✓



**FERROKER ALUMINIO**  
V5590577 - 100088303  
59.6x59.6 cm (x10.5 mm)  
23 1/2"x23 1/2"  
Gres Porcelánico  
Porcelain tile  
V3  
G354  
Butech: Junta Colorstuk Manhattan ✓



**FERROKER NIQUEL**  
V5590587 - 100091835  
59.6x59.6 cm (x10.5 mm)  
23 1/2"x23 1/2"  
Gres Porcelánico  
Porcelain tile  
V2  
G354  
Butech: Junta Colorstuk Gris ✓

# FERROKER



**FERROKER PLATINO**  
V5590585 - 100090798  
59.6x59.6 cm (x10.5 mm)  
23 1/2"x23 1/2"  
Gres Porcelánico  
Porcelain tile  
V2  
G354  
Butech: Junta Colorstuk Blanco ✓



**FERROKER TITANIO**  
V5590588 - 100091840  
59.6x59.6 cm (x10.5 mm)  
23 1/2"x23 1/2"  
Gres Porcelánico  
Porcelain tile  
V2  
G354  
Butech: Junta Colorstuk Marfil ✓

FLOOR TILES

| EMBALAJE PACKAGING      |            |                                |         | COLOCACIÓN FIXING              |   | IMPORTANTE IMPORTANT  |
|-------------------------|------------|--------------------------------|---------|--------------------------------|---|---|
| Descripción Description | x Caja Box |                                | x Palet |                                | Recomendamos We recommend: Butech                       | ✓ color de junta recomendado recommended grout colour   |
| 59.6x59.6 cm            | Pieces     | M <sup>2</sup> Kg <sup>*</sup> | Box     | M <sup>2</sup> Kg <sup>*</sup> | Adhesivo / adhesive<br>One-Flex, Maxifluid<br>Super-one | [59.6x59.6 cm] disponible para <b>CLU-KER n</b> <b>CLU-KER n</b> also available<br><br>Utilizar materiales de colocación específicos para Gres Porcelánico<br>Use specific Porcelain Tiles setting materials<br><br>Colecciones complementarias Complementary collections: [Ruggine, Shine, Queens] |
|                         | 3          | 1.07 26.49                     | 32      | 34.10 847                      | Junta Grout<br>Colorstuk                                |   |

\*Valores aproximados Approximated values



Suelo Floor  
Ferroker Aluminio 44x66 cm

# FERROKER

MATE-BRILLO  
MATT-GLOSS

EXTERIORES  
EXTERIORS

## PAVIMENTO FLOOR TILE



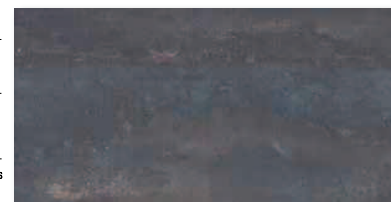
STON-KER



RECTIFICADO  
RECTIFIED



BESTONIFICADO  
TONE VARIADOS



**FERROKER**  
V7590155 - 100103298  
45x90 cm (x10.5 mm)  
17 3/4"x35 3/8"  
Gres Porcelánico  
Porcelain tile  
V3  
G363  
Butech: Junta Colorstuk Antracita ✓



STON-KER



RECTIFICADO  
RECTIFIED



BESTONIFICADO  
TONE VARIADOS



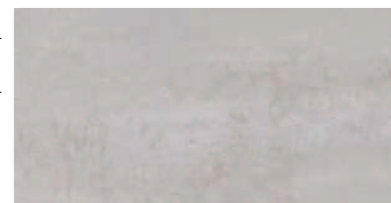
**FERROKER ALUMINIO**  
V7590192 - 100106345  
45x90 cm (x10.5 mm)  
17 3/4"x35 3/8"  
Gres Porcelánico  
Porcelain tile  
V3  
G363  
Butech: Junta Colorstuk Manhattan ✓



STON-KER



RECTIFICADO  
RECTIFIED



**FERROKER NÍQUEL**  
V7590193 - 100106346  
45x90 cm (x10.5 mm)  
17 3/4"x35 3/8"  
Gres Porcelánico  
Porcelain tile  
V2  
G363  
Butech: Junta Colorstuk Gris ✓



STON-KER



RECTIFICADO  
RECTIFIED



**FERROKER PLATINO**  
V7590171 - 100105297  
45x90 cm (x10.5 mm)  
17 3/4"x35 3/8"  
Gres Porcelánico  
Porcelain tile  
V2  
G363  
Butech: Junta Colorstuk Blanco ✓



STON-KER



RECTIFICADO  
RECTIFIED



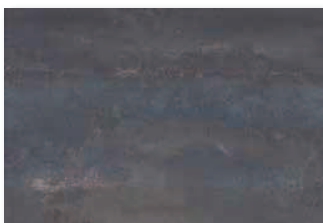
**FERROKER TITANIO**  
V7590164 - 100104642  
45x90 cm - (x10.5 mm)  
17 3/4"x35 3/8"  
Gres Porcelánico  
Porcelain tile  
V2  
G363  
Butech: Junta Colorstuk Marfil ✓

INFORMACIÓN TÉCNICA EN LA PÁGINA SIGUIENTE TECHNICAL INFORMATION ON THE FOLLOWING PAGES

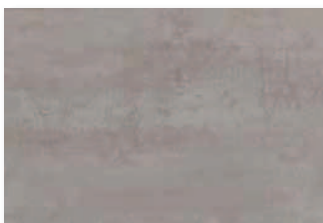
# FERROKER



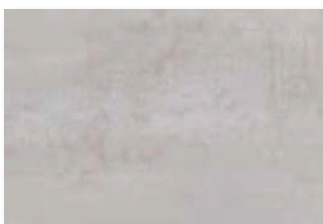
PAVIMENTO  
FLOOR TILE



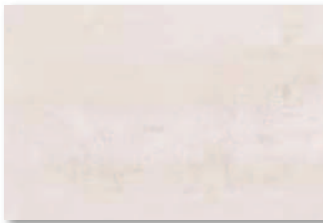
**FERROKER**  
V5621700 - 100026602  
44x66 cm (x10.1 mm)  
17 3/8" x 26"  
Gres Porcelánico  
Porcelain tile  
V3  
G344  
Butech: Junta Colorstuk Antracita ✓



**FERROKER ALUMINIO**  
V5621701 - 100026606  
44x66 cm (x10.1 mm)  
17 3/8" x 26"  
Gres Porcelánico  
Porcelain tile  
V3  
G344  
Butech: Junta Colorstuk Manhattan ✓



**FERROKER NIQUEL**  
V5629990 - 100091783  
44x66 cm (x10.1 mm)  
17 3/8" x 26"  
Gres Porcelánico  
Porcelain tile  
V2  
G344  
Butech: Junta Colorstuk Gris ✓



**FERROKER PLATINO**  
V5629989 - 100091784  
44x66 cm (x10.1 mm)  
17 3/8" x 26"  
Gres Porcelánico  
Porcelain tile  
V2  
G344  
Butech: Junta Colorstuk Blanco ✓

# FERROKER



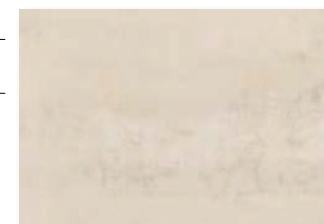
PAVIMENTO  
FLOOR TILE



**FERROKER CALDERA**  
V5621703 - 100026614  
44x66 cm (x10.1 mm)  
17 3/8" x 26"  
Gres Porcelánico  
Porcelain tile  
V3  
G344  
Butech: Junta Colorstuk Marrón ✓



**FERROKER LATÓN**  
V5621702 - 100026610  
44x66 cm (x10.1 mm)  
17 3/8" x 26"  
Gres Porcelánico  
Porcelain tile  
V3  
G344  
Butech: Junta Colorstuk Beige ✓



**FERROKER TITANIO**  
V5629988 - 100091785  
44x66 cm (x10.1 mm)  
17 3/8" x 26"  
Gres Porcelánico  
Porcelain tile  
V2  
G344  
Butech: Junta Colorstuk Marfil ✓

FLOOR TILES

| EMBALAJE PACKAGING      |            |                |         | COLOCACIÓN FIXING |                           |                   |                                | IMPORTANTE IMPORTANT |
|-------------------------|------------|----------------|---------|-------------------|---------------------------|-------------------|--------------------------------|----------------------|
| Descripción Description | x Caja Box |                | x Palet |                   | Recomendamos We recommend |                   | Butech                         |                      |
|                         | Pieces     | M <sup>2</sup> | Box     | M <sup>2</sup>    | Kg*                       | Adhesivo Adhesive | Junta Grout                    |                      |
| 45x90 cm                | 3          | 1.22           | 30.75   | 44                | 53.68                     | 1353              | One-Flex, Maxifluid, Super-one | Colorstuk            |
| 44x66 cm                | 3          | 0.87           | 21.18   | 60                | 52.27                     | 1270              |                                |                      |

✓ color de junta recomendado recommended grout colour

Utilizar materiales de colocación específicos para Gres Porcelánico  
Use specific Porcelain Tiles setting materials

Colecciones complementarias Complementary collections: (Ruggine, Shine, Queens)

\*Valores aproximados Approximated values



# FERROKER



## PAVIMENTO FLOOR TILE



**FERROKER V2449923**  
100046033  
44.3x44.3 cm (x9.4 mm)  
17 1/2"x17 1/2"  
Gres Porcelánico  
Porcelain tile  
V3  
G311  
Butech:  
Junta Colorstuk Antracita



**FERROKER ALUMINIO V2449928**  
100088015  
44.3x44.3 cm (x9.4 mm)  
17 1/2"x17 1/2"  
Gres Porcelánico  
Porcelain tile  
V3  
G311  
Butech:  
Junta Colorstuk Manhattan



**FERROKER PLATINO V5460001**  
100091836  
44.3x44.3 cm (x9.4 mm)  
17 1/2"x17 1/2"  
Gres Porcelánico  
Porcelain tile  
V2  
G311  
Butech:  
Junta Colorstuk Blanco



**FERROKER NIQUEL V5460004**  
100091833  
44.3x44.3 cm (x9.4 mm)  
17 1/2"x17 1/2"  
Gres Porcelánico  
Porcelain tile  
V2  
G311  
Butech:  
Junta Colorstuk Gris



**FERROKER TITANIO V5460002**  
100091838  
44.3x44.3 cm (x9.4 mm)  
17 1/2"x17 1/2"  
Gres Porcelánico  
Porcelain tile  
V2  
G311  
Butech:  
Junta Colorstuk Marfil



Suelo y pared Floor and wall  
Ferroker 44x66 cm

FLOOR TILES

## PIEZA ESPECIAL SPECIAL PIECE



**HUELLA TÉCNICA (1)**  
FERROKER V7700055 - 100139155  
FERROKER ALUMINIO V7700052 - 100139156  
FERROKER LATÓN V7700051 - 100139158  
FERROKER CALDERA V7700054 - 100139157  
FERROKER NIQUEL V7700034 - 100121575  
FERROKER PLATINO V7700056 - 100139159  
FERROKER TITANIO V7700042 - 100126687

31.6x66 cm 12 1/2"x26"  
G130



**ZÓCALO**  
FERROKER V7070160 - 100027187  
FERROKER ALUMINIO V7070161 - 100027190  
FERROKER LATÓN V7070162 - 100027193  
FERROKER CALDERA V7070163 - 100027196  
FERROKER NIQUEL V7071611 - 100092032  
FERROKER PLATINO V7071610 - 100092034  
FERROKER TITANIO V7071609 - 100092036

10x44 cm (x10.1 mm) 4"x17 3/8"  
G11



**ZÓCALO**  
FERROKER V4830038 - 100110236  
FERROKER NIQUEL V4830039 - 100110239  
FERROKER ALUMINIO V4830049 - 100112609  
FERROKER PLATINO V4830050 - 100112610  
FERROKER TITANIO V4830045 - 100111727

10x59.6 cm (x10.5 mm) 4"x23 1/2"  
G30



**ZÓCALO**  
FERROKER V4859942 - 100121763  
FERROKER ALUMINIO V4859925 - 100110237  
FERROKER NIQUEL V4859923 - 100110238  
FERROKER LATÓN V4859926 - 100110296  
FERROKER PLATINO V4859929 - 100110819  
FERROKER TITANIO V4859928 - 100110820

10x44.3 cm (x9.4 mm) 4"x17 1/2"  
G7

| EMBALAJE PACKAGING        |                                       |  |                                    | COLOCACIÓN FIXING              |             | IMPORTANTE IMPORTANT  |
|---------------------------|---------------------------------------|--|------------------------------------|--------------------------------|-------------|---|
| Descripción Description   | x Caja Box                            |  | x Palet                            | Recomendamos We recommend      | Butech      | ✓ color de junta recomendado recommended grout colour   |
|                           | Piezas M <sup>2</sup> Kg <sup>*</sup> |  | Box M <sup>2</sup> Kg <sup>*</sup> | Adhesivo Adhesive              | Junta Grout |   |
| Huella Técnica 31.6x66 cm | 2 0.46 12.42                          |  | 40 18.42 496                       | One-Flex, Maxifluid, Super-one | Colorstuk   | Utilizar materiales de colocación específicos para Gres Porcelánico<br>Use specific Porcelain Tiles setting materials   |
| Zócalo 10x59.6 cm         | 18 1.07 26.26                         |  | 56 60.07 1470                      |                                |             | Colecciones complementarias Complementary collections: [Ruggine, Shine, Queens]   |
| Zócalo 10x44.3 cm         | 20 0.88 17.94                         |  | 72 63.79 1369                      |                                |             | (1) Huella Técnica, Huella Técnica Esquina DE / IZ;<br>Consultar Guía Técnica. No disponible en stock. Consultar condiciones<br>See Technical Guide. Not in stock. Check conditions |
| Zócalo 10x44 cm           | 20 0.88 20.40                         |  | 42 36.96 856                       |                                |             |   |

\*Valores aproximados Approximated values

| EMBALAJE PACKAGING      |                                       |  |                                    | COLOCACIÓN FIXING              |             | IMPORTANTE IMPORTANT  |
|-------------------------|---------------------------------------|--|------------------------------------|--------------------------------|-------------|---|
| Descripción Description | x Caja Box                            |  | x Palet                            | Recomendamos We recommend      | Butech      | ✓ color de junta recomendado recommended grout colour   |
|                         | Piezas M <sup>2</sup> Kg <sup>*</sup> |  | Box M <sup>2</sup> Kg <sup>*</sup> | Adhesivo Adhesive              | Junta Grout |   |
| 44.3x44.3 cm            | 5 0.98 22.30                          |  | 66 64.76 1471                      | One-Flex, Maxifluid, Super-one | Colorstuk   | Utilizar materiales de colocación específicos para Gres Porcelánico<br>Use specific Porcelain Tiles setting materials |
|                         |                                       |  |                                    |                                |             | Colecciones complementarias Complementary collections: [Ruggine, Shine, Queens]                                       |

\*Valores aproximados Approximated values