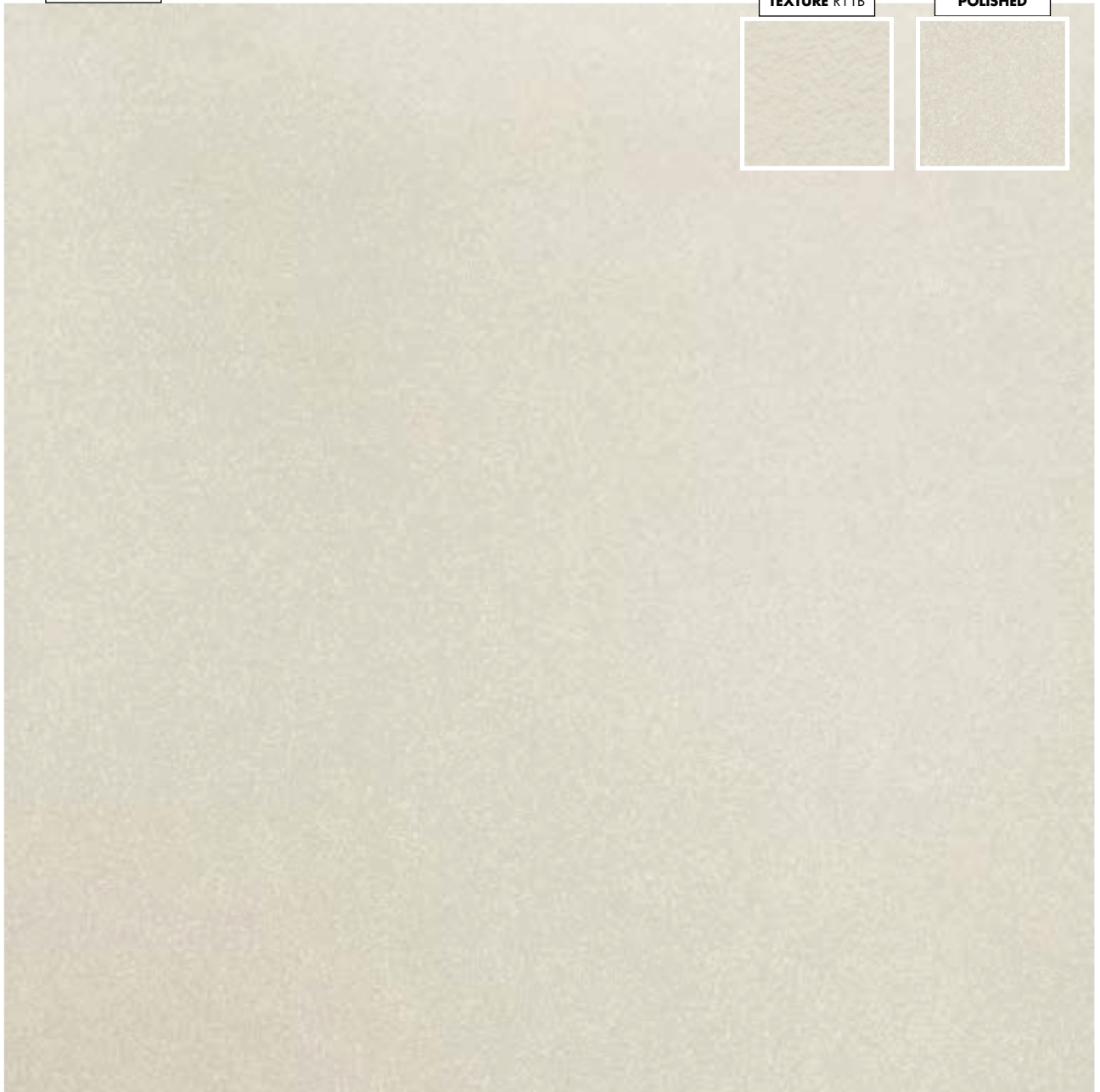




NEO

NATURE R9A**TEXTURE R11B****POLISHED****NEO WHITE**

Formato (cm.) Format (inches)	Espesor (mm.) Thickness (inches)	Acabado Finish	Código KEA KEA Code	Código SAP SAP Code	Valor UPEC UPEC Value
29,7x59,6	11 ³ / ₄ "x23 ¹ / ₂ "	9,5 3/8"	Polished	C220401051	100143407 G471
59,6x59,6	23 ¹ / ₂ "x23 ¹ / ₂ "	9,5 3/8"	Polished	C226000181	100130488 G458
29,7x59,6	11 ³ / ₄ "x23 ¹ / ₂ "	10,4 7/16"	Nature	C220400961	100143081 G453 U4 P4 E3 C2
59,6x59,6	23 ¹ / ₂ "x23 ¹ / ₂ "	10,4 7/16"	Nature	C226001221	100143110 G455 U4 P4+E3 C2
29,7x59,6	11 ³ / ₄ "x23 ¹ / ₂ "	10,4 7/16"	Texture	C220400141	100141301 G453 U4 P4 E3 C2
59,6x59,6	23 ¹ / ₂ "x23 ¹ / ₂ "	10,4 7/16"	Texture	C226000751	100143111 G455 U4 P4+E3 C2



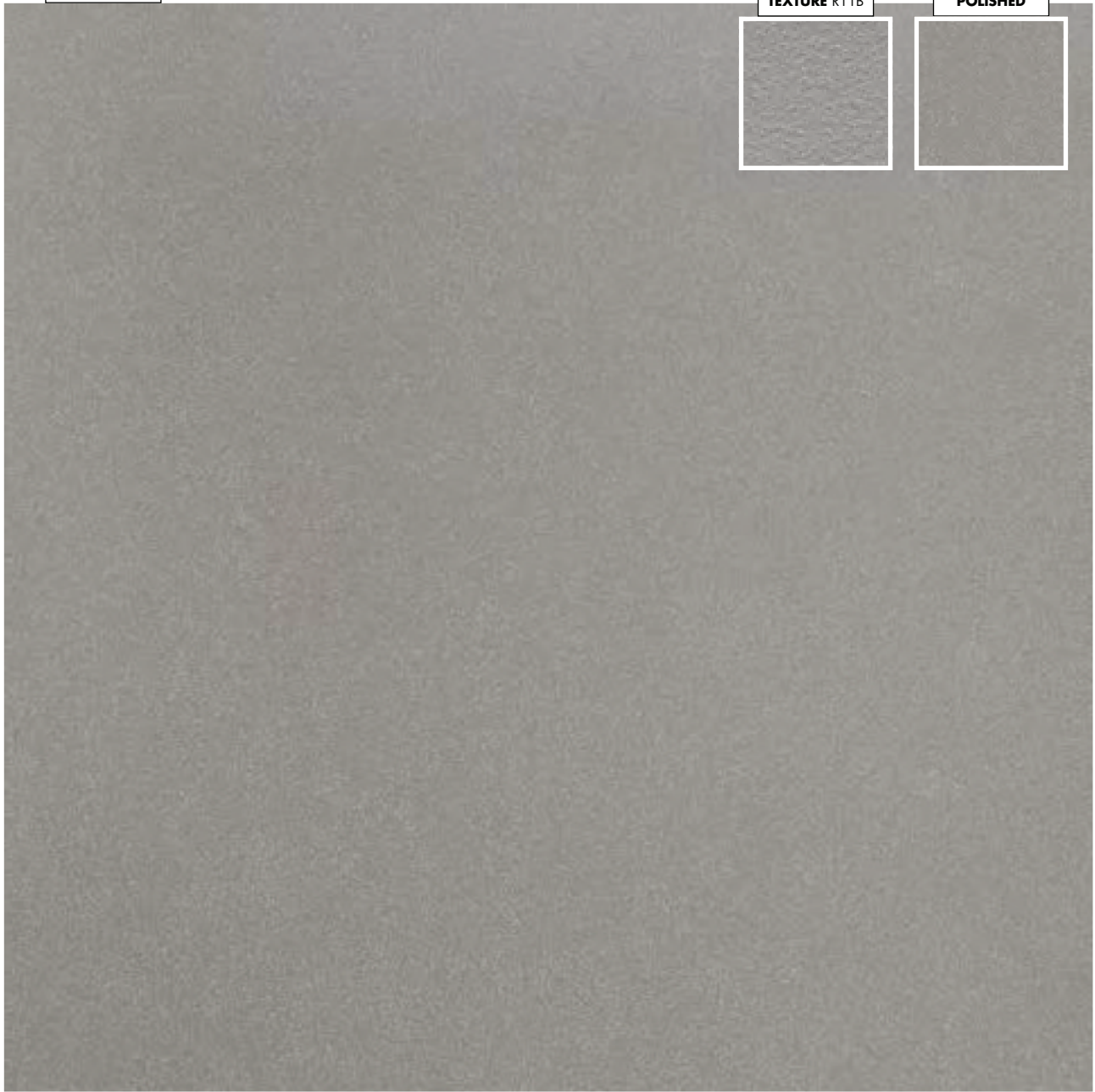
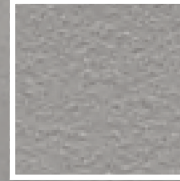
POLISHED**TEXTURE R11B****NATURE R9A**

NEO

NEO BEIGE

Formato (cm.) Format (inches)	Espesor (mm.) Thickness (inches)	Acabado Finish	Código KEA KEA Code	Código SAP SAP Code	Valor UPEC UPEC Value
29,7x59,6 11 ³ / ₄ "x23 ¹ / ₂ "	9,5 3/8"	Polished	C220400891	100143332	G455
59,6x59,6 23 ¹ / ₂ "x23 ¹ / ₂ "	9,5 3/8"	Polished	C226000581	100143100	G457
29,7x59,6 11 ³ / ₄ "x23 ¹ / ₂ "	10,4 7/16"	Nature	C220400941	100143058	G452 U4 P4 E3 C2
59,6x59,6 23 ¹ / ₂ "x23 ¹ / ₂ "	10,4 7/16"	Nature	C226000591	100143099	G454 U4 P4+E3 C2
29,7x59,6 11 ³ / ₄ "x23 ¹ / ₂ "	10,4 7/16"	Texture	C220401041	100143077	G452
59,6x59,6 23 ¹ / ₂ "x23 ¹ / ₂ "	10,4 7/16"	Texture	C226000611	100143101	G454



NATURE R9A**TEXTURE R11B****POLISHED****NEO GREY**

Formato (cm.) Format (inches)	Espesor (mm.) Thickness (inches)	Acabado Finish	Código KEA KEA Code	Código SAP SAP Code	Valor UPEC UPEC Value
29,7x59,6 11 ³ / ₄ "x23 ¹ / ₂ "	9,5 3/8"	Polished	C220400901	100143335	G455
59,6x59,6 23 ¹ / ₂ "x23 ¹ / ₂ "	9,5 3/8"	Polished	C226000931	100143108	G457
29,7x59,6 11 ³ / ₄ "x23 ¹ / ₂ "	10,4 7/16"	Nature	C220400971	100143071	G452 U4 P4 E3 C2
59,6x59,6 23 ¹ / ₂ "x23 ¹ / ₂ "	10,4 7/16"	Nature	C226001021	100143107	G454 U4 P4+E3 C2
29,7x59,6 11 ³ / ₄ "x23 ¹ / ₂ "	10,4 7/16"	Texture	C220400981	100143059	G452
59,6x59,6 23 ¹ / ₂ "x23 ¹ / ₂ "	10,4 7/16"	Texture	C226000351	100138811	G454



POLISHED**TEXTURE R11B****NATURE R9A**

NEO

NEO BLACK

Formato (cm.) Format (inches)	Espesor (mm.) Thickness (inches)	Acabado Finish	Código KEA KEA Code	Código SAP SAP Code	Valor UPEC UPEC Value
29,7x59,6	11 ³ / ₄ "x23 ¹ / ₂ "	Polished	C220400881	100143333	G455
59,6x59,6	23 ¹ / ₂ "x23 ¹ / ₂ "	Polished	C226000601	100143102	G457
29,7x59,6	11 ³ / ₄ "x23 ¹ / ₂ "	Nature	C220400131	100141283	G453 U4 P4 E3 C2
59,6x59,6	23 ¹ / ₂ "x23 ¹ / ₂ "	Nature	C226000081	100121300	G455 U4 P4+E3 C2
29,7x59,6	11 ³ / ₄ "x23 ¹ / ₂ "	Texture	C220400031	100136315	G453
59,6x59,6	23 ¹ / ₂ "x23 ¹ / ₂ "	Texture	C226000241	100136316	G455

