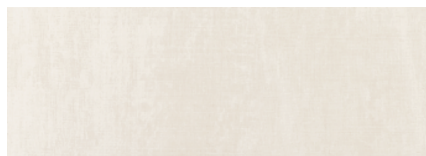


SAFARI

Revestimiento Monoporosa Rectificado / Wall Tiles Rectified



SAFARI ARENA
31,6x90x0,9cm
Butech recomienda junta / Butech recommends joint: Colorstak Rapid n Beige B22502016 / 100004308

P3470822 / 100172733

G261

PERFIL SAFARI ARENA
1,5x31,6cm

P6209121 / 100173563

G77



SAFARI CALIZA
31,6x90x0,9cm
Butech recomienda junta / Butech recommends joint: Colorstak Rapid n Marfil B22502009 / 100004302

P3470824 / 100172734

G261

PERFIL SAFARI CALIZA
1,5x31,6cm

P6209120 / 100173570

G77

TECHNICAL SPECS - INFORMACIÓN TÉCNICA

EMBALAJE / PACKING

FORMATO cm	PZ/CJ	MZ/CJ	CJ/PAL	MZ/PAL	*KG/CJ	*KG/PAL	Adhesivo
31,6x90cm	4	1,14	57	64,84	16,2	923,4	Fr-one n
1,5x31,6cm	30	0,28	42	11,94	3,72	156,24	Fr-one n

*valores aproximados. *approximated values.

PAVIMENTO COMBINABLE: SERIE SAFARI 59,6x59,6cm - PAG.186
FLOOR TILES COMBINATIONS: SAFARI SERIES 59,6x59,6cm - PAG.186



SAFARI ARENA 31,6x90cm

JAPAN

Revestimiento Monoporosa Rectificado / Wall Tiles Rectified



JAPAN BLANCO
31,6x90x0,9cm
Butech recomienda junta / Butech recommends joint: Colorstak Rapid n Gris B22502013 / 100004305

P3470669 / 100135524

G261

PERFIL JAPAN BLANCO
1,5x31,6cm

P6209103 / 100138755

G77



JAPAN LINE BLANCO
31,6x90x0,9cm
Butech recomienda junta / Butech recommends joint: Colorstak Rapid n Gris B22502013 / 100004305

P3470665 / 100135526

G271



JAPAN MARINE
31,6x90x0,9cm
Butech recomienda junta / Butech recommends joint: Colorstak Rapid n Cemento B22502004 / 100004297

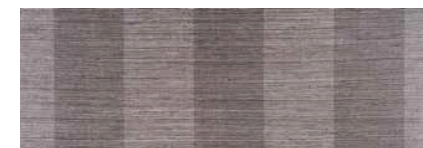
P3470658 / 100135530

G261

PERFIL JAPAN MARINE
1,5x31,6cm

P6209088 / 100138757

G77



JAPAN LINE MARINE
31,6x90x0,9cm
Butech recomienda junta / Butech recommends joint: Colorstak Rapid n Cemento B22502004 / 100004297

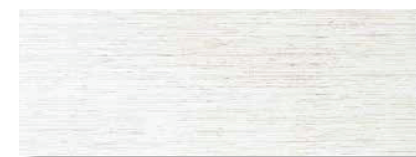
P3470672 / 100135528

G271



YAKARTA

Revestimiento Monoporosa Rectificado / Wall Tiles Rectified



YAKARTA BLANCO
31,6x90x0,93cm
Butech recomienda junta / Butech recommends joint: Colorstak Rapid n Beige B22502016 / 100004308

P3470502 / 100096156

G261

PERFIL YAKARTA BLANCO
1,5x31,6cm

P6200371 / 100029155

G77

TECHNICAL SPECS - INFORMACIÓN TÉCNICA

EMBALAJE / PACKING

FORMATO cm	PZ/CJ	MZ/CJ	CJ/PAL	MZ/PAL	*KG/CJ	*KG/PAL	Adhesivo
31,6x90cm	4	1,14	57	64,84	18,56	1055	Fr-one n
1,5x31,6cm	30	0,28	42	11,94	3,83	160,93	Fr-one n

*valores aproximados. *approximated values.