

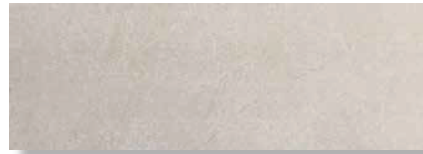
# BOSTON

Revestimiento Monoporosa Rectificado / Wall Tiles Rectified



**BOSTON BONE**  
31.6x90x0.9cm P3470844 / 100179282 G261  
Butech recomienda junta / Butech recommends joint: Colorstuk Rapid n Gris B22502011 / 100004304

**PERFIL BOSTON BONE**  
1.5x31.6cm P6209125 / 100180392 G77



**BOSTON TOPO**  
31.6x90x0.9cm P3470845 / 100179290 G261  
Butech recomienda junta / Butech recommends joint: Colorstuk Rapid n Gris B22502011 / 100004304

**PERFIL BOSTON TOPO**  
1.5x31.6cm P6209126 / 100180393 G77



**DECO BOSTON BONE**  
31.6x90x1.15cm P3470843 / 100179275 G271  
Butech recomienda junta / Butech recommends joint: Colorstuk Rapid n Gris B22502011 / 100004304



**DECO BOSTON TOPO**  
31.6x90x1.15cm P3470842 / 100179267 G271  
Butech recomienda junta / Butech recommends joint: Colorstuk Rapid n Gris B22502011 / 100004304

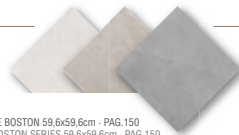
## TECHNICAL SPECS - INFORMACIÓN TÉCNICA

EMBALAJE / PACKING							
FORMATO cm	PZ/CJ	MZ/CJ	CJ/PAL	MZ/PAL	*M2/CJ	*M2/PAL	Adhesivo
31.6x90cm	4	1,14	57	64,84	18,97	1081,44	Fr-one n
31.6x90cm Deco	3	0,85	66	56,31	15,27	1007,88	Fr-one n
1.5x31.6cm	30	0,28	42	11,94	3,83	160,93	Fr-one n

\*valores aproximados. \*approximated values.

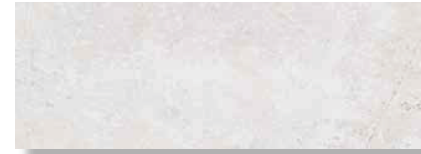


PAVIMENTO COMBINABLE: SERIE BOSTON 59.6x59.6cm - PAG.150  
FLOOR TILES COMBINATIONS: BOSTON SERIES 59.6x59.6cm - PAG.150



# ARIZONA

Revestimiento Monoporosa Rectificado / Wall Tiles Rectified



**ARIZONA CALIZA**  
31.6x90x0.9cm P3470463 / 100095614 G261  
Butech recomienda junta / Butech recommends joint: Colorstuk Rapid n Gris B22502013 / 100004305

**PERFIL ARIZONA CALIZA**  
1.5x90cm P6560231 / 100098866 G97  
1.5x31.6cm P6209052 / 100098865 G77



**MOSAICO ARIZONA CALIZA**  
31.6x90x1.01cm P3470539 / 100098148 G271  
Butech recomienda junta / Butech recommends joint: Colorstuk Rapid n Gris B22502013 / 100004305

## TECHNICAL SPECS - INFORMACIÓN TÉCNICA

EMBALAJE / PACKING							
FORMATO cm	PZ/CJ	MZ/CJ	CJ/PAL	MZ/PAL	*M2/CJ	*M2/PAL	Adhesivo
31.6x90cm	4	1,14	57	64,84	18,48	1053,36	Fr-one n
31.6x90cm Mos.	3	0,85	66	56,31	12,72	839,32	Fr-one n
1.5x31.6cm	30	0,28	42	11,94	3,6	151	Fr-one n
1.5x90cm	15	0,41	28	11,34	5,4	151,2	Fr-one n

\*valores aproximados. \*approximated values.



PAVIMENTO COMBINABLE: SERIE ARIZONA 44.3x44.3cm - PAG.211  
FLOOR TILES COMBINATIONS: ARIZONA SERIES 44.3x44.3cm - PAG.211



# ARIZONA CALIZA 31.6x90cm